

**iQparts**  
IQ-PARTS-SHOP.COM



**SPECS &  
INFORMATION**

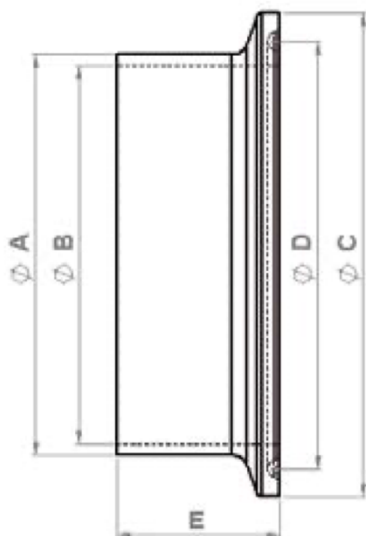
## Flanchstutzen ASME BPE

### Werkstoffe:

AISI 316L (1.4404) Niedriger Schwefelgehalt

Oberfläche: Hygieneklasse H3

Innen: <0,8 µm, Außen: <1,6 µm



ASME BPE	Rohr AD <b>A</b>	Rohr ID <b>B</b>	Flansch AD <b>C</b>	Nut <b>D</b>	Kurz (KK) <b>E</b>	Item-No.
3/8"	9,52	7,74	25,0	20,2	44,5	20399995
1/2"	12,70	9,40	25,0	20,2	44,5	20400001
3/4"	19,05	15,75	25,0	20,2	44,5	20400051
1"	25,40	22,10	50,5	43,5	44,5	20400101
1 1/2"	38,10	34,80	50,5	43,5	44,5	20400151
2"	50,80	47,50	64,0	56,5	57,2	20400201
2 1/2"	63,50	60,20	77,5	70,5	57,2	20400251
3"	76,20	72,90	91,0	83,5	57,2	20400301
4"	101,60	97,38	119,0	110,0	57,2	20400401
6"	152,40	146,86	167,0	156,5	76,2	20400601





**iq**  
**parts**  
IQ-PARTS-SHOP.COM

info@iq-parts.nl  
Harsweg 34A  
2461 EZ Ter Aar  
T +31 252 624 126  
The Netherlands